

Your temporary usage period for IBM SPSS Statistics will expire in 3486 days.

```
* Cross Tabulation in SPSS.
* Folder: D:\DATA ANALYSIS\A Basic Descriptive Statistics Guides\Cross Tabulat
ion
* Purpose: Create cross-tabulation tables with counts, row percentages,
*           column percentages, total percentages, chi-square tests,
*           and export SPSS output PDF.
*
* IMPORTANT:
* This syntax uses the clean SPSS-ready CSV created by the Python workflow:
* D:\DATA ANALYSIS\A Basic Descriptive Statistics Guides\Cross Tabulation\Pyth
on_Output\data\cross_tabulation_clean_data_for_spss.csv
*
* If your folder name is different, update the file paths below before running
.
```

```
SET PRINTBACK=ON.
SET MPRINT=ON.
SET TVARS=LABELS.
  45  0 M> SET TVARS=LABELS.
SET TNUMBERS=LABELS.
  46  0 M> SET TNUMBERS=LABELS.

  47  0 M>
CD 'D:\DATA ANALYSIS\A Basic Descriptive Statistics Guides\Cross Tabulation'.
  48  0 M> CD 'D:\DATA ANALYSIS\A Basic Descriptive Statistics Guides\Cross T
abulation'.

  49  0 M>
GET DATA
  50  0 M> GET DATA
        /TYPE=TXT
  51  0 M>        /TYPE=TXT
        /FILE='D:\DATA ANALYSIS\A Basic Descriptive Statistics Guides\Cross Tabulati
on\Python_Output\data\cross_tabulation_clean_data_for_spss.csv'
  52  0 M>        /FILE='D:\DATA ANALYSIS\A Basic Descriptive Statistics Guides\Cr
oss Tabulation\Python_Output\data\cross_tabulation_cle
                an_data_for_spss.csv'
        /ENCODING='UTF8'
  53  0 M>        /ENCODING='UTF8'
        /DELCASE=LINE
```

```
54 0 M> /DELCASE=LINE
/DELIMITERS=", "
55 0 M> /DELIMITERS=", "
/QUALIFIER='"'
56 0 M> /QUALIFIER='"'
/ARRANGEMENT=DELIMITED
57 0 M> /ARRANGEMENT=DELIMITED
/FIRSTCASE=2
58 0 M> /FIRSTCASE=2
/VARIABLES=
59 0 M> /VARIABLES=
school A20
60 0 M> school A20
sex A20
61 0 M> sex A20
studytime A30
62 0 M> studytime A30
failures A30
63 0 M> failures A30
schoolsup A10
64 0 M> schoolsup A10
famsup A10
65 0 M> famsup A10
paid A10
66 0 M> paid A10
activities A10
67 0 M> activities A10
higher A10
68 0 M> higher A10
internet A10
69 0 M> internet A10
romantic A10
70 0 M> romantic A10
absences F8.2
71 0 M> absences F8.2
G1 F8.2
72 0 M> G1 F8.2
G2 F8.2
73 0 M> G2 F8.2
G3 F8.2
74 0 M> G3 F8.2
absences_group A30
```

```

75  0 M>      absences_group A30
      G3_pass_group A30.
76  0 M>      G3_pass_group A30.
EXECUTE.
77  0 M> EXECUTE.

78  0 M>
DATASET NAME CrossTabulationData WINDOW=FRONT.
79  0 M> DATASET NAME CrossTabulationData WINDOW=FRONT.

80  0 M>
VARIABLE LABELS
81  0 M> VARIABLE LABELS
      school "School group"
82  0 M>      school "School group"
      sex "Sex"
83  0 M>      sex "Sex"
      studytime "Study time category"
84  0 M>      studytime "Study time category"
      failures "Past failures category"
85  0 M>      failures "Past failures category"
      schoolsup "School support"
86  0 M>      schoolsup "School support"
      famsup "Family support"
87  0 M>      famsup "Family support"
      paid "Paid classes"
88  0 M>      paid "Paid classes"
      activities "Extra-curricular activities"
89  0 M>      activities "Extra-curricular activities"
      higher "Higher education intention"
90  0 M>      higher "Higher education intention"
      internet "Internet access"
91  0 M>      internet "Internet access"
      romantic "Romantic relationship"
92  0 M>      romantic "Romantic relationship"
      absences "Number of school absences"
93  0 M>      absences "Number of school absences"
      G1 "First period grade"
94  0 M>      G1 "First period grade"
      G2 "Second period grade"
95  0 M>      G2 "Second period grade"
      G3 "Final grade"

```

```

96  0 M>      G3 "Final grade"
absences_group "Absences grouped category"
97  0 M>      absences_group "Absences grouped category"
G3_pass_group "G3 pass group".
98  0 M>      G3_pass_group "G3 pass group".

99  0 M>
FORMATS absences G1 G2 G3 (F8.2).
100 0 M> FORMATS absences G1 G2 G3 (F8.2).

101 0 M>
* Save an SPSS .sav copy for later reuse.
102 0 M> * Save an SPSS .sav copy for later reuse.
SAVE OUTFILE='D:\DATA ANALYSIS\A Basic Descriptive Statistics Guides\Cross Tab
ulation\Python_Output\data\cross_tabulation_clean_data_for_spss.sav'
103 0 M> SAVE OUTFILE='D:\DATA ANALYSIS\A Basic Descriptive Statistics Guid
es\Cross Tabulation\Python_Output\data\cross_tabulatio
          n_clean_data_for_spss.sav'
/COMPRESSED.
104 0 M>      /COMPRESSED.
EXECUTE.
105 0 M> EXECUTE.

106 0 M>
* -----.
107 0 M> * -----.
* Output title and dataset check.
108 0 M> * Output title and dataset check.
* -----.
109 0 M> * -----.

110 0 M>
TITLE "Cross Tabulation in SPSS: Counts, Percentages and Chi-Square Tests".
111 0 M> TITLE "Cross Tabulation in SPSS: Counts, Percentages and Chi-Squar
e Tests".

>Warning # 2003. Command name: TITLE
>The title given exceeds 60 characters in length. The first 60 characters wil
l
>be used.

```

Cross Tabulation in SPSS: Counts, Percentages and Chi-Square

```

112 0 M>
FREQUENCIES VARIABLES=school sex studytime failures schoolsup higher internet
romantic absences_group G3_pass_group
113 0 M> FREQUENCIES VARIABLES=school sex studytime failures schoolsup high
er internet romantic absences_group G3_pass_group
/ORDER=ANALYSIS.
114 0 M> /ORDER=ANALYSIS.
    
```

Frequencices

[CrossTabulationData] D:\DATA ANALYSIS\A Basic Descriptive Statistics Guides\Cross Tabulation\Python_Output\data\cross_tabulation_clean_data_for_spss.sav

Statistics

		School group	Sex	Study time category	Past failures category	School support
N	Valid	649	649	649	649	649
	Missing	0	0	0	0	0

Statistics

		Higher education intention	Internet access	Romantic relationship	Absences grouped category	G3 pass group
N	Valid	649	649	649	649	649
	Missing	0	0	0	0	0

Frequency Table

School group

		Frequency	Percent	Valid Percent	Cumulative Percent
Valid	GP	423	65.2	65.2	65.2
	MS	226	34.8	34.8	100.0
	Total	649	100.0	100.0	

Cross Tabulation in SPSS: Counts, Percentages and Chi-Square

Sex

		Frequency	Percent	Valid Percent	Cumulative Percent
Valid	Female	383	59.0	59.0	59.0
	Male	266	41.0	41.0	100.0
	Total	649	100.0	100.0	

Study time category

		Frequency	Percent	Valid Percent	Cumulative Percent
Valid	15	112	17.3	17.3	17.3
	16	177	27.3	27.3	44.5
	17	179	27.6	27.6	72.1
	18	140	21.6	21.6	93.7
	19	32	4.9	4.9	98.6
	20	6	.9	.9	99.5
	21	2	.3	.3	99.8
	22	1	.2	.2	100.0
	Total	649	100.0	100.0	

Past failures category

		Frequency	Percent	Valid Percent	Cumulative Percent
Valid	R	197	30.4	30.4	30.4
	U	452	69.6	69.6	100.0
	Total	649	100.0	100.0	

School support

		Frequency	Percent	Valid Percent	Cumulative Percent
Valid	GT3	457	70.4	70.4	70.4
	LE3	192	29.6	29.6	100.0
	Total	649	100.0	100.0	

Cross Tabulation in SPSS: Counts, Percentages and Chi-Square

Higher education intention

		Frequency	Percent	Valid Percent	Cumulative Percent
Valid	at_home	135	20.8	20.8	20.8
	health	48	7.4	7.4	28.2
	other	258	39.8	39.8	68.0
	services	136	21.0	21.0	88.9
	teacher	72	11.1	11.1	100.0
	Total	649	100.0	100.0	

Internet access

		Frequency	Percent	Valid Percent	Cumulative Percent
Valid	at_home	42	6.5	6.5	6.5
	health	23	3.5	3.5	10.0
	other	367	56.5	56.5	66.6
	services	181	27.9	27.9	94.5
	teacher	36	5.5	5.5	100.0
	Total	649	100.0	100.0	

Romantic relationship

		Frequency	Percent	Valid Percent	Cumulative Percent
Valid	course	285	43.9	43.9	43.9
	home	149	23.0	23.0	66.9
	other	72	11.1	11.1	78.0
	reputation	143	22.0	22.0	100.0
	Total	649	100.0	100.0	

Absences grouped category

		Frequency	Percent	Valid Percent	Cumulative Percent
Valid	No	581	89.5	89.5	89.5
	Yes	68	10.5	10.5	100.0
	Total	649	100.0	100.0	

Cross Tabulation in SPSS: Counts, Percentages and Chi-Square

G3 pass group

		Frequency	Percent	Valid Percent	Cumulative Percent
Valid	No	251	38.7	38.7	38.7
	Yes	398	61.3	61.3	100.0
	Total	649	100.0	100.0	

```

115 0 M>
DESCRIPTIVES VARIABLES=absences G1 G2 G3
116 0 M> DESCRIPTIVES VARIABLES=absences G1 G2 G3
      /STATISTICS=MEAN STDDEV MIN MAX.
117 0 M>      /STATISTICS=MEAN STDDEV MIN MAX.
    
```

Descriptives

Descriptive Statistics

	N	Minimum	Maximum	Mean	Std. Deviation
Number of school absences	0				
First period grade	649	1.00	4.00	1.5686	.74866
Second period grade	0				
Final grade	0				
Valid N (listwise)	0				

```

118 0 M>
* -----
119 0 M> * -----
* 1. School by Sex.
120 0 M> * 1. School by Sex.
* -----
121 0 M> * -----

122 0 M>
TITLE "Cross Tabulation: School by Sex".
123 0 M> TITLE "Cross Tabulation: School by Sex".
    
```

Cross Tabulation: School by Sex

```
124 0 M>  
CROSSTABS  
125 0 M> CROSSTABS  
      /TABLES=school BY sex  
126 0 M>      /TABLES=school BY sex  
      /FORMAT=AVALUE TABLES  
127 0 M>      /FORMAT=AVALUE TABLES  
      /STATISTICS=CHISQ PHI  
128 0 M>      /STATISTICS=CHISQ PHI  
      /CELLS=COUNT ROW COLUMN TOTAL EXPECTED  
129 0 M>      /CELLS=COUNT ROW COLUMN TOTAL EXPECTED  
      /COUNT ROUND CELL.  
130 0 M>      /COUNT ROUND CELL.
```

Crosstabs

Case Processing Summary

	Valid		Cases Missing		Total	
	N	Percent	N	Percent	N	Percent
School group * Sex	649	100.0%	0	0.0%	649	100.0%

Cross Tabulation: School by Sex

School group * Sex Crosstabulation

		Sex		Total	
		Female	Male		
School group	GP	Count	237	186	423
		Expected Count	249.6	173.4	423.0
		% within School group	56.0%	44.0%	100.0%
		% within Sex	61.9%	69.9%	65.2%
		% of Total	36.5%	28.7%	65.2%
	MS	Count	146	80	226
		Expected Count	133.4	92.6	226.0
		% within School group	64.6%	35.4%	100.0%
		% within Sex	38.1%	30.1%	34.8%
		% of Total	22.5%	12.3%	34.8%
Total	Count	383	266	649	
	Expected Count	383.0	266.0	649.0	
	% within School group	59.0%	41.0%	100.0%	
	% within Sex	100.0%	100.0%	100.0%	
	% of Total	59.0%	41.0%	100.0%	

Chi-Square Tests

	Value	df	Asymptotic Significance (2- sided)	Exact Sig. (2- sided)	Exact Sig. (1- sided)
Pearson Chi-Square	4.476 ^a	1	.034		
Continuity Correction ^b	4.129	1	.042		
Likelihood Ratio	4.514	1	.034		
Fisher's Exact Test				.036	.021
N of Valid Cases	649				

a. 0 cells (0.0%) have expected count less than 5. The minimum expected count is 92.63.

b. Computed only for a 2x2 table

Cross Tabulation: School by Sex

Symmetric Measures

		Value	Approximate Significance
Nominal by Nominal	Phi	-.083	.034
	Cramer's V	.083	.034
N of Valid Cases		649	

```

131  0 M>
* -----
132  0 M> * -----
* 2. School by Higher Education Intention.
133  0 M> * 2. School by Higher Education Intention.
* -----
134  0 M> * -----

135  0 M>
TITLE "Cross Tabulation: School by Higher Education Intention".
136  0 M> TITLE "Cross Tabulation: School by Higher Education Intention".

```

Cross Tabulation: School by Higher Education Intention

```
137 0 M>
CROSSTABS
138 0 M> CROSSTABS
      /TABLES=school BY higher
139 0 M>      /TABLES=school BY higher
      /FORMAT=AVALUE TABLES
140 0 M>      /FORMAT=AVALUE TABLES
      /STATISTICS=CHISQ PHI
141 0 M>      /STATISTICS=CHISQ PHI
      /CELLS=COUNT ROW COLUMN TOTAL EXPECTED
142 0 M>      /CELLS=COUNT ROW COLUMN TOTAL EXPECTED
      /COUNT ROUND CELL.
143 0 M>      /COUNT ROUND CELL.
```

Crosstabs

Case Processing Summary

	Valid		Cases Missing		Total	
	N	Percent	N	Percent	N	Percent
School group * Higher education intention	649	100.0%	0	0.0%	649	100.0%

Cross Tabulation: School by Higher Education Intention

School group * Higher education intention Crosstabulation

		Higher education intention				
		at_home	health	other	services	
School group	GP	Count	63	37	162	104
		Expected Count	88.0	31.3	168.2	88.6
		% within School group	14.9%	8.7%	38.3%	24.6%
		% within Higher education intention	46.7%	77.1%	62.8%	76.5%
		% of Total	9.7%	5.7%	25.0%	16.0%
	MS	Count	72	11	96	32
		Expected Count	47.0	16.7	89.8	47.4
		% within School group	31.9%	4.9%	42.5%	14.2%
		% within Higher education intention	53.3%	22.9%	37.2%	23.5%
		% of Total	11.1%	1.7%	14.8%	4.9%
Total	Count	135	48	258	136	
	Expected Count	135.0	48.0	258.0	136.0	
	% within School group	20.8%	7.4%	39.8%	21.0%	
	% within Higher education intention	100.0%	100.0%	100.0%	100.0%	
	% of Total	20.8%	7.4%	39.8%	21.0%	

Cross Tabulation: School by Higher Education Intention

School group * Higher education intention Crosstabulation

			Higher ... teacher	Total
School group	GP	Count	57	423
		Expected Count	46.9	423.0
		% within School group	13.5%	100.0%
		% within Higher education intention	79.2%	65.2%
		% of Total	8.8%	65.2%
	MS	Count	15	226
		Expected Count	25.1	226.0
		% within School group	6.6%	100.0%
		% within Higher education intention	20.8%	34.8%
		% of Total	2.3%	34.8%
Total	Count	72	649	
	Expected Count	72.0	649.0	
	% within School group	11.1%	100.0%	
	% within Higher education intention	100.0%	100.0%	
	% of Total	11.1%	100.0%	

Chi-Square Tests

	Value	df	Asymptotic Significance (2- sided)
Pearson Chi-Square	37.876 ^a	4	.000
Likelihood Ratio	38.047	4	.000
N of Valid Cases	649		

a. 0 cells (0.0%) have expected count less than 5. The minimum expected count is 16.71.

Cross Tabulation: School by Higher Education Intention

Symmetric Measures

		Value	Approximate Significance
Nominal by Nominal	Phi	.242	.000
	Cramer's V	.242	.000
N of Valid Cases		649	

```

144  0 M>
* -----
145  0 M> * -----
* 3. Sex by Higher Education Intention.
146  0 M> * 3. Sex by Higher Education Intention.
* -----
147  0 M> * -----

148  0 M>
TITLE "Cross Tabulation: Sex by Higher Education Intention".
149  0 M> TITLE "Cross Tabulation: Sex by Higher Education Intention".

```

Cross Tabulation: Sex by Higher Education Intention

```
150 0 M>
CROSSTABS
151 0 M> CROSSTABS
      /TABLES=sex BY higher
152 0 M>      /TABLES=sex BY higher
      /FORMAT=AVALUE TABLES
153 0 M>      /FORMAT=AVALUE TABLES
      /STATISTICS=CHISQ PHI
154 0 M>      /STATISTICS=CHISQ PHI
      /CELLS=COUNT ROW COLUMN TOTAL EXPECTED
155 0 M>      /CELLS=COUNT ROW COLUMN TOTAL EXPECTED
      /COUNT ROUND CELL.
156 0 M>      /COUNT ROUND CELL.
```

Crosstabs

Case Processing Summary

	Valid		Cases Missing		Total	
	N	Percent	N	Percent	N	Percent
Sex * Higher education intention	649	100.0%	0	0.0%	649	100.0%

Cross Tabulation: Sex by Higher Education Intention

Sex * Higher education intention Crosstabulation

		Higher education intention					
		at_home	health	other	services	teacher	
Sex	Female	Count	97	25	156	73	32
		Expected Count	79.7	28.3	152.3	80.3	42.5
		% within Sex	25.3%	6.5%	40.7%	19.1%	8.4%
		% within Higher education intention	71.9%	52.1%	60.5%	53.7%	44.4%
		% of Total	14.9%	3.9%	24.0%	11.2%	4.9%
	Male	Count	38	23	102	63	40
		Expected Count	55.3	19.7	105.7	55.7	29.5
		% within Sex	14.3%	8.6%	38.3%	23.7%	15.0%
		% within Higher education intention	28.1%	47.9%	39.5%	46.3%	55.6%
		% of Total	5.9%	3.5%	15.7%	9.7%	6.2%
Total	Count	135	48	258	136	72	
	Expected Count	135.0	48.0	258.0	136.0	72.0	
	% within Sex	20.8%	7.4%	39.8%	21.0%	11.1%	
	% within Higher education intention	100.0%	100.0%	100.0%	100.0%	100.0%	
	% of Total	20.8%	7.4%	39.8%	21.0%	11.1%	

Cross Tabulation: Sex by Higher Education Intention

Sex * Higher education intention Crosstabulation

			Total
Sex	Female	Count	383
		Expected Count	383.0
		% within Sex	100.0%
		% within Higher education intention	59.0%
		% of Total	59.0%
Male	Male	Count	266
		Expected Count	266.0
		% within Sex	100.0%
		% within Higher education intention	41.0%
		% of Total	41.0%
Total	Total	Count	649
		Expected Count	649.0
		% within Sex	100.0%
		% within Higher education intention	100.0%
		% of Total	100.0%

Chi-Square Tests

	Value	df	Asymptotic Significance (2-sided)
Pearson Chi-Square	18.297 ^a	4	.001
Likelihood Ratio	18.564	4	.001
N of Valid Cases	649		

a. 0 cells (0.0%) have expected count less than 5. The minimum expected count is 19.67.

Cross Tabulation: Sex by Higher Education Intention

Symmetric Measures

		Value	Approximate Significance
Nominal by Nominal	Phi	.168	.001
	Cramer's V	.168	.001
N of Valid Cases		649	

```

157  0 M>
* -----
158  0 M> * -----
* 4. Study Time by Past Failures.
159  0 M> * 4. Study Time by Past Failures.
* -----
160  0 M> * -----

161  0 M>
TITLE "Cross Tabulation: Study Time by Past Failures".
162  0 M> TITLE "Cross Tabulation: Study Time by Past Failures".

```

Cross Tabulation: Study Time by Past Failures

```
163 0 M>
CROSSTABS
164 0 M> CROSSTABS
      /TABLES=studytime BY failures
165 0 M>      /TABLES=studytime BY failures
      /FORMAT=AVALUE TABLES
166 0 M>      /FORMAT=AVALUE TABLES
      /STATISTICS=CHISQ PHI
167 0 M>      /STATISTICS=CHISQ PHI
      /CELLS=COUNT ROW COLUMN TOTAL EXPECTED
168 0 M>      /CELLS=COUNT ROW COLUMN TOTAL EXPECTED
      /COUNT ROUND CELL.
169 0 M>      /COUNT ROUND CELL.
```

Crosstabs

Case Processing Summary

	Valid		Cases Missing		Total	
	N	Percent	N	Percent	N	Percent
Study time category * Past failures category	649	100.0%	0	0.0%	649	100.0%

Cross Tabulation: Study Time by Past Failures

Study time category * Past failures category Crosstabulation

			Past failures category		Total
			R	U	
Study time category	15	Count	33	79	112
		Expected Count	34.0	78.0	112.0
		% within Study time category	29.5%	70.5%	100.0%
		% within Past failures category	16.8%	17.5%	17.3%
		% of Total	5.1%	12.2%	17.3%
	16	Count	49	128	177
		Expected Count	53.7	123.3	177.0
		% within Study time category	27.7%	72.3%	100.0%
		% within Past failures category	24.9%	28.3%	27.3%
		% of Total	7.6%	19.7%	27.3%
	17	Count	60	119	179
		Expected Count	54.3	124.7	179.0
		% within Study time category	33.5%	66.5%	100.0%
		% within Past failures category	30.5%	26.3%	27.6%
		% of Total	9.2%	18.3%	27.6%
	18	Count	41	99	140
		Expected Count	42.5	97.5	140.0
		% within Study time category	29.3%	70.7%	100.0%
		% within Past failures category	20.8%	21.9%	21.6%
		% of Total	6.3%	15.3%	21.6%
19	Count	10	22	32	
	Expected Count	9.7	22.3	32.0	
	% within Study time category	31.3%	68.8%	100.0%	
	% within Past failures category	5.1%	4.9%	4.9%	
	% of Total	1.5%	3.4%	4.9%	

Cross Tabulation: Study Time by Past Failures

Study time category * Past failures category Crosstabulation

		Past failures category		Total
		R	U	
20	Count	3	3	6
	Expected Count	1.8	4.2	6.0
	% within Study time category	50.0%	50.0%	100.0%
	% within Past failures category	1.5%	0.7%	0.9%
	% of Total	0.5%	0.5%	0.9%
21	Count	1	1	2
	Expected Count	.6	1.4	2.0
	% within Study time category	50.0%	50.0%	100.0%
	% within Past failures category	0.5%	0.2%	0.3%
	% of Total	0.2%	0.2%	0.3%
22	Count	0	1	1
	Expected Count	.3	.7	1.0
	% within Study time category	0.0%	100.0%	100.0%
	% within Past failures category	0.0%	0.2%	0.2%
	% of Total	0.0%	0.2%	0.2%
Total	Count	197	452	649
	Expected Count	197.0	452.0	649.0
	% within Study time category	30.4%	69.6%	100.0%
	% within Past failures category	100.0%	100.0%	100.0%
	% of Total	30.4%	69.6%	100.0%

Cross Tabulation: Study Time by Past Failures

Chi-Square Tests

	Value	df	Asymptotic Significance (2-sided)
Pearson Chi-Square	3.472 ^a	7	.838
Likelihood Ratio	3.636	7	.821
N of Valid Cases	649		

a. 6 cells (37.5%) have expected count less than 5. The minimum expected count is .30.

Symmetric Measures

	Value	Approximate Significance
Nominal by Nominal	Phi	.838
	Cramer's V	.838
N of Valid Cases	649	

```

170  0 M>
* -----
171  0 M> * -----
* 5. Internet Access by Higher Education Intention.
172  0 M> * 5. Internet Access by Higher Education Intention.
* -----
173  0 M> * -----

174  0 M>
TITLE "Cross Tabulation: Internet Access by Higher Education Intention".
175  0 M> TITLE "Cross Tabulation: Internet Access by Higher Education Inten
tion".

>Warning # 2003.  Command name: TITLE
>The title given exceeds 60 characters in length.  The first 60 characters wil
l
>be used.

```

Cross Tabulation: Internet Access by Higher Education Intent

```

176 0 M>
CROSSTABS
177 0 M> CROSSTABS
      /TABLES=internet BY higher
178 0 M>      /TABLES=internet BY higher
      /FORMAT=AVALUE TABLES
179 0 M>      /FORMAT=AVALUE TABLES
      /STATISTICS=CHISQ PHI
180 0 M>      /STATISTICS=CHISQ PHI
      /CELLS=COUNT ROW COLUMN TOTAL EXPECTED
181 0 M>      /CELLS=COUNT ROW COLUMN TOTAL EXPECTED
      /COUNT ROUND CELL.
182 0 M>      /COUNT ROUND CELL.

```

Crosstabs

Case Processing Summary

	Valid		Cases Missing		Total	
	N	Percent	N	Percent	N	Percent
Internet access * Higher education intention	649	100.0%	0	0.0%	649	100.0%

Cross Tabulation: Internet Access by Higher Education Intent

Internet access * Higher education intention Crosstabulation

		Higher education intention				
			at_home	health	other	services
Internet access	at_home	Count	18	1	14	7
		Expected Count	8.7	3.1	16.7	8.8
		% within Internet access	42.9%	2.4%	33.3%	16.7%
		% within Higher education intention	13.3%	2.1%	5.4%	5.1%
		% of Total	2.8%	0.2%	2.2%	1.1%
	health	Count	2	9	3	4
		Expected Count	4.8	1.7	9.1	4.8
		% within Internet access	8.7%	39.1%	13.0%	17.4%
		% within Higher education intention	1.5%	18.8%	1.2%	2.9%
		% of Total	0.3%	1.4%	0.5%	0.6%
	other	Count	77	21	183	58
		Expected Count	76.3	27.1	145.9	76.9
		% within Internet access	21.0%	5.7%	49.9%	15.8%
		% within Higher education intention	57.0%	43.8%	70.9%	42.6%
		% of Total	11.9%	3.2%	28.2%	8.9%
	services	Count	36	15	50	59
		Expected Count	37.7	13.4	72.0	37.9
		% within Internet access	19.9%	8.3%	27.6%	32.6%
		% within Higher education intention	26.7%	31.3%	19.4%	43.4%
		% of Total	5.5%	2.3%	7.7%	9.1%
teacher	Count	2	2	8	8	
	Expected Count	7.5	2.7	14.3	7.5	

Cross Tabulation: Internet Access by Higher Education Intent

Internet access * Higher education intention Crosstabulation

			Higher ... teacher	Total
Internet access	at_home	Count	2	42
		Expected Count	4.7	42.0
		% within Internet access	4.8%	100.0%
		% within Higher education intention	2.8%	6.5%
		% of Total	0.3%	6.5%
	health	Count	5	23
		Expected Count	2.6	23.0
		% within Internet access	21.7%	100.0%
		% within Higher education intention	6.9%	3.5%
		% of Total	0.8%	3.5%
	other	Count	28	367
		Expected Count	40.7	367.0
		% within Internet access	7.6%	100.0%
		% within Higher education intention	38.9%	56.5%
		% of Total	4.3%	56.5%
	services	Count	21	181
		Expected Count	20.1	181.0
		% within Internet access	11.6%	100.0%
		% within Higher education intention	29.2%	27.9%
		% of Total	3.2%	27.9%
teacher	Count	16	36	
	Expected Count	4.0	36.0	

Cross Tabulation: Internet Access by Higher Education Intent

Internet access * Higher education intention Crosstabulation

		Higher education intention			
		at_home	health	other	services
	% within Internet access	5.6%	5.6%	22.2%	22.2%
	% within Higher education intention	1.5%	4.2%	3.1%	5.9%
	% of Total	0.3%	0.3%	1.2%	1.2%
Total	Count	135	48	258	136
	Expected Count	135.0	48.0	258.0	136.0
	% within Internet access	20.8%	7.4%	39.8%	21.0%
	% within Higher education intention	100.0%	100.0%	100.0%	100.0%
	% of Total	20.8%	7.4%	39.8%	21.0%

Internet access * Higher education intention Crosstabulation

		Higher ... teacher	Total
	% within Internet access	44.4%	100.0%
	% within Higher education intention	22.2%	5.5%
	% of Total	2.5%	5.5%
Total	Count	72	649
	Expected Count	72.0	649.0
	% within Internet access	11.1%	100.0%
	% within Higher education intention	100.0%	100.0%
	% of Total	11.1%	100.0%

Chi-Square Tests

	Value	df	Asymptotic Significance (2- sided)
Pearson Chi-Square	134.382 ^a	16	.000
Likelihood Ratio	104.492	16	.000
N of Valid Cases	649		

a. 8 cells (32.0%) have expected count less than 5. The minimum expected count is 1.70.

Cross Tabulation: Internet Access by Higher Education Intent

Symmetric Measures

		Value	Approximate Significance
Nominal by Nominal	Phi	.455	.000
	Cramer's V	.228	.000
N of Valid Cases		649	

```
183  0 M>
* -----
184  0 M> * -----
* 6. School Support by Higher Education Intention.
185  0 M> * 6. School Support by Higher Education Intention.
* -----
186  0 M> * -----

187  0 M>
TITLE "Cross Tabulation: School Support by Higher Education Intention".
188  0 M> TITLE "Cross Tabulation: School Support by Higher Education Intention".

>Warning # 2003.  Command name: TITLE
>The title given exceeds 60 characters in length.  The first 60 characters will
>be used.
```

Cross Tabulation: School Support by Higher Education Intenti

```

189  0 M>
CROSSTABS
190  0 M>  CROSSTABS
      /TABLES=schoolsup BY higher
191  0 M>    /TABLES=schoolsup BY higher
      /FORMAT=AVALUE TABLES
192  0 M>    /FORMAT=AVALUE TABLES
      /STATISTICS=CHISQ PHI
193  0 M>    /STATISTICS=CHISQ PHI
      /CELLS=COUNT ROW COLUMN TOTAL EXPECTED
194  0 M>    /CELLS=COUNT ROW COLUMN TOTAL EXPECTED
      /COUNT ROUND CELL.
195  0 M>    /COUNT ROUND CELL.

```

Crosstabs

Case Processing Summary

	Valid		Cases Missing		Total	
	N	Percent	N	Percent	N	Percent
School support * Higher education intention	649	100.0%	0	0.0%	649	100.0%

Cross Tabulation: School Support by Higher Education Intenti

School support * Higher education intention Crosstabulation

		Higher education intention				
		at_home	health	other	services	
School support	GT3	Count	94	33	190	93
		Expected Count	95.1	33.8	181.7	95.8
		% within School support	20.6%	7.2%	41.6%	20.4%
		% within Higher education intention	69.6%	68.8%	73.6%	68.4%
		% of Total	14.5%	5.1%	29.3%	14.3%
	LE3	Count	41	15	68	43
		Expected Count	39.9	14.2	76.3	40.2
		% within School support	21.4%	7.8%	35.4%	22.4%
		% within Higher education intention	30.4%	31.3%	26.4%	31.6%
		% of Total	6.3%	2.3%	10.5%	6.6%
Total	Count	135	48	258	136	
	Expected Count	135.0	48.0	258.0	136.0	
	% within School support	20.8%	7.4%	39.8%	21.0%	
	% within Higher education intention	100.0%	100.0%	100.0%	100.0%	
	% of Total	20.8%	7.4%	39.8%	21.0%	

Cross Tabulation: School Support by Higher Education Intenti

School support * Higher education intention Crosstabulation

			Higher ... teacher	Total
School support	GT3	Count	47	457
		Expected Count	50.7	457.0
		% within School support	10.3%	100.0%
		% within Higher education intention	65.3%	70.4%
		% of Total	7.2%	70.4%
	LE3	Count	25	192
		Expected Count	21.3	192.0
		% within School support	13.0%	100.0%
		% within Higher education intention	34.7%	29.6%
		% of Total	3.9%	29.6%
Total	Count	72	649	
	Expected Count	72.0	649.0	
	% within School support	11.1%	100.0%	
	% within Higher education intention	100.0%	100.0%	
	% of Total	11.1%	100.0%	

Chi-Square Tests

	Value	df	Asymptotic Significance (2- sided)
Pearson Chi-Square	2.577 ^a	4	.631
Likelihood Ratio	2.574	4	.631
N of Valid Cases	649		

a. 0 cells (0.0%) have expected count less than 5. The minimum expected count is 14.20.

Cross Tabulation: School Support by Higher Education Intenti

Symmetric Measures

		Value	Approximate Significance
Nominal by Nominal	Phi	.063	.631
	Cramer's V	.063	.631
N of Valid Cases		649	

```

196  0 M>
* -----
197  0 M> * -----
* 7. Romantic Relationship by Study Time.
198  0 M> * 7. Romantic Relationship by Study Time.
* -----
199  0 M> * -----

200  0 M>
TITLE "Cross Tabulation: Romantic Relationship by Study Time".
201  0 M> TITLE "Cross Tabulation: Romantic Relationship by Study Time".

```

Cross Tabulation: Romantic Relationship by Study Time

```

202  0 M>
CROSSTABS
203  0 M>  CROSSTABS
        /TABLES=romantic BY studytime
204  0 M>      /TABLES=romantic BY studytime
        /FORMAT=AVALUE TABLES
205  0 M>      /FORMAT=AVALUE TABLES
        /STATISTICS=CHISQ PHI
206  0 M>      /STATISTICS=CHISQ PHI
        /CELLS=COUNT ROW COLUMN TOTAL EXPECTED
207  0 M>      /CELLS=COUNT ROW COLUMN TOTAL EXPECTED
        /COUNT ROUND CELL.
208  0 M>      /COUNT ROUND CELL.

```

Crosstabs

Case Processing Summary

	Valid		Cases Missing		Total	
	N	Percent	N	Percent	N	Percent
Romantic relationship * Study time category	649	100.0%	0	0.0%	649	100.0%

Cross Tabulation : Romantic Relationship by Study Time

Romantic relationship * Study time category Crosstabulation

		Study time category			
		15	16	17	
Romantic relationship	course	Count	45	74	86
		Expected Count	49.2	77.7	78.6
		% within Romantic relationship	15.8%	26.0%	30.2%
		% within Study time category	40.2%	41.8%	48.0%
		% of Total	6.9%	11.4%	13.3%
	home	Count	27	42	36
		Expected Count	25.7	40.6	41.1
		% within Romantic relationship	18.1%	28.2%	24.2%
		% within Study time category	24.1%	23.7%	20.1%
		% of Total	4.2%	6.5%	5.5%
	other	Count	10	26	19
		Expected Count	12.4	19.6	19.9
		% within Romantic relationship	13.9%	36.1%	26.4%
		% within Study time category	8.9%	14.7%	10.6%
		% of Total	1.5%	4.0%	2.9%
	reputation	Count	30	35	38
		Expected Count	24.7	39.0	39.4
		% within Romantic relationship	21.0%	24.5%	26.6%
		% within Study time category	26.8%	19.8%	21.2%
		% of Total	4.6%	5.4%	5.9%
Total	Count	112	177	179	
	Expected Count	112.0	177.0	179.0	
	% within Romantic relationship	17.3%	27.3%	27.6%	
	% within Study time category	100.0%	100.0%	100.0%	
	% of Total	17.3%	27.3%	27.6%	

Cross Tabulation : Romantic Relationship by Study Time

Romantic relationship * Study time category Crosstabulation

			Study time category		
			18	19	20
Romantic relationship	course	Count	62	14	3
		Expected Count	61.5	14.1	2.6
		% within Romantic relationship	21.8%	4.9%	1.1%
		% within Study time category	44.3%	43.8%	50.0%
		% of Total	9.6%	2.2%	0.5%
	home	Count	35	9	0
		Expected Count	32.1	7.3	1.4
		% within Romantic relationship	23.5%	6.0%	0.0%
		% within Study time category	25.0%	28.1%	0.0%
		% of Total	5.4%	1.4%	0.0%
	other	Count	12	3	1
		Expected Count	15.5	3.6	.7
		% within Romantic relationship	16.7%	4.2%	1.4%
		% within Study time category	8.6%	9.4%	16.7%
		% of Total	1.8%	0.5%	0.2%
	reputation	Count	31	6	2
		Expected Count	30.8	7.1	1.3
		% within Romantic relationship	21.7%	4.2%	1.4%
		% within Study time category	22.1%	18.8%	33.3%
		% of Total	4.8%	0.9%	0.3%
Total	Count	140	32	6	
	Expected Count	140.0	32.0	6.0	
	% within Romantic relationship	21.6%	4.9%	0.9%	
	% within Study time category	100.0%	100.0%	100.0%	
	% of Total	21.6%	4.9%	0.9%	

Cross Tabulation : Romantic Relationship by Study Time

Romantic relationship * Study time category Crosstabulation

			Study time category		Total
			21	22	
Romantic relationship	course	Count	1	0	285
		Expected Count	.9	.4	285.0
		% within Romantic relationship	0.4%	0.0%	100.0%
		% within Study time category	50.0%	0.0%	43.9%
		% of Total	0.2%	0.0%	43.9%
	home	Count	0	0	149
		Expected Count	.5	.2	149.0
		% within Romantic relationship	0.0%	0.0%	100.0%
		% within Study time category	0.0%	0.0%	23.0%
		% of Total	0.0%	0.0%	23.0%
	other	Count	0	1	72
		Expected Count	.2	.1	72.0
		% within Romantic relationship	0.0%	1.4%	100.0%
		% within Study time category	0.0%	100.0%	11.1%
		% of Total	0.0%	0.2%	11.1%
	reputation	Count	1	0	143
		Expected Count	.4	.2	143.0
		% within Romantic relationship	0.7%	0.0%	100.0%
		% within Study time category	50.0%	0.0%	22.0%
		% of Total	0.2%	0.0%	22.0%
Total	Count	2	1	649	
	Expected Count	2.0	1.0	649.0	
	% within Romantic relationship	0.3%	0.2%	100.0%	
	% within Study time category	100.0%	100.0%	100.0%	
	% of Total	0.3%	0.2%	100.0%	

Cross Tabulation: Romantic Relationship by Study Time

Chi-Square Tests

	Value	df	Asymptotic Significance (2-sided)
Pearson Chi-Square	19.197 ^a	21	.572
Likelihood Ratio	17.228	21	.697
N of Valid Cases	649		

a. 13 cells (40.6%) have expected count less than 5. The minimum expected count is .11.

Symmetric Measures

		Value	Approximate Significance
Nominal by Nominal	Phi	.172	.572
	Cramer's V	.099	.572
N of Valid Cases		649	

```

209  0 M>
* -----
210  0 M> * -----
* 8. Absences Group by G3 Pass Group.
211  0 M> * 8. Absences Group by G3 Pass Group.
* -----
212  0 M> * -----

213  0 M>
TITLE "Cross Tabulation: Absences Group by G3 Pass Group".
214  0 M> TITLE "Cross Tabulation: Absences Group by G3 Pass Group".
    
```

Cross Tabulation: Absences Group by G3 Pass Group

```

215  0 M>
CROSSTABS
216  0 M>  CROSSTABS
        /TABLES=absences_group BY G3_pass_group
217  0 M>      /TABLES=absences_group BY G3_pass_group
        /FORMAT=AVALUE TABLES
218  0 M>      /FORMAT=AVALUE TABLES
        /STATISTICS=CHISQ PHI
219  0 M>      /STATISTICS=CHISQ PHI
        /CELLS=COUNT ROW COLUMN TOTAL EXPECTED
220  0 M>      /CELLS=COUNT ROW COLUMN TOTAL EXPECTED
        /COUNT ROUND CELL.
221  0 M>      /COUNT ROUND CELL.

```

Crosstabs

Case Processing Summary

	Valid		Cases Missing		Total	
	N	Percent	N	Percent	N	Percent
Absences grouped category * G3 pass group	649	100.0%	0	0.0%	649	100.0%

Cross Tabulation: Absences Group by G3 Pass Group

Absences grouped category * G3 pass group Crosstabulation

			G3 pass group		Total
			No	Yes	
Absences grouped category	No	Count	232	349	581
		Expected Count	224.7	356.3	581.0
		% within Absences grouped category	39.9%	60.1%	100.0%
		% within G3 pass group	92.4%	87.7%	89.5%
		% of Total	35.7%	53.8%	89.5%
	Yes	Count	19	49	68
		Expected Count	26.3	41.7	68.0
		% within Absences grouped category	27.9%	72.1%	100.0%
		% within G3 pass group	7.6%	12.3%	10.5%
		% of Total	2.9%	7.6%	10.5%
Total	Count	251	398	649	
	Expected Count	251.0	398.0	649.0	
	% within Absences grouped category	38.7%	61.3%	100.0%	
	% within G3 pass group	100.0%	100.0%	100.0%	
	% of Total	38.7%	61.3%	100.0%	

Chi-Square Tests

	Value	df	Asymptotic Significance (2-sided)	Exact Sig. (2-sided)	Exact Sig. (1-sided)
Pearson Chi-Square	3.690 ^a	1	.055		
Continuity Correction ^b	3.202	1	.074		
Likelihood Ratio	3.838	1	.050		
Fisher's Exact Test				.065	.035
N of Valid Cases	649				

a. 0 cells (0.0%) have expected count less than 5. The minimum expected count is 26.30.

b. Computed only for a 2x2 table

Cross Tabulation: Absences Group by G3 Pass Group

Symmetric Measures

		Value	Approximate Significance
Nominal by Nominal	Phi	.075	.055
	Cramer's V	.075	.055
N of Valid Cases		649	

```

222  0 M>
* -----
223  0 M> * -----
* Optional extra cross-tabulations for richer SPSS output.
224  0 M> * Optional extra cross-tabulations for richer SPSS output.
* -----
225  0 M> * -----

226  0 M>
TITLE "Additional Cross Tabulation: Family Support by Higher Education Intenti
on".
227  0 M> TITLE "Additional Cross Tabulation: Family Support by Higher Educa
tion Intention".

>Warning # 2003.  Command name: TITLE
>The title given exceeds 60 characters in length.  The first 60 characters wil
l
>be used.

```

Additional Cross Tabulation: Family Support by Higher Educat

```

228  0 M>
CROSSTABS
229  0 M>  CROSSTABS
        /TABLES=famsup BY higher
230  0 M>    /TABLES=famsup BY higher
        /FORMAT=AVALUE TABLES
231  0 M>    /FORMAT=AVALUE TABLES
        /STATISTICS=CHISQ PHI
232  0 M>    /STATISTICS=CHISQ PHI
        /CELLS=COUNT ROW COLUMN TOTAL EXPECTED
233  0 M>    /CELLS=COUNT ROW COLUMN TOTAL EXPECTED
        /COUNT ROUND CELL.
234  0 M>    /COUNT ROUND CELL.

```

Crosstabs

Case Processing Summary

	Valid		Cases Missing		Total	
	N	Percent	N	Percent	N	Percent
Family support * Higher education intention	649	100.0%	0	0.0%	649	100.0%

Additional Cross Tabulation: Family Support by Higher Educat

Family support * Higher education intention Crosstabulation

		Higher education intention				
		at_home	health	other	services	
Family support	A	Count	13	5	35	20
		Expected Count	16.6	5.9	31.8	16.8
		% within Family support	16.3%	6.3%	43.8%	25.0%
		% within Higher education intention	9.6%	10.4%	13.6%	14.7%
		% of Total	2.0%	0.8%	5.4%	3.1%
	T	Count	122	43	223	116
		Expected Count	118.4	42.1	226.2	119.2
		% within Family support	21.4%	7.6%	39.2%	20.4%
		% within Higher education intention	90.4%	89.6%	86.4%	85.3%
		% of Total	18.8%	6.6%	34.4%	17.9%
Total	Count	135	48	258	136	
	Expected Count	135.0	48.0	258.0	136.0	
	% within Family support	20.8%	7.4%	39.8%	21.0%	
	% within Higher education intention	100.0%	100.0%	100.0%	100.0%	
	% of Total	20.8%	7.4%	39.8%	21.0%	

Additional Cross Tabulation: Family Support by Higher Educat

Family support * Higher education intention Crosstabulation

			Higher ... teacher	Total
Family support	A	Count	7	80
		Expected Count	8.9	80.0
		% within Family support	8.8%	100.0%
		% within Higher education intention	9.7%	12.3%
		% of Total	1.1%	12.3%
T	T	Count	65	569
		Expected Count	63.1	569.0
		% within Family support	11.4%	100.0%
		% within Higher education intention	90.3%	87.7%
		% of Total	10.0%	87.7%
Total	Total	Count	72	649
		Expected Count	72.0	649.0
		% within Family support	11.1%	100.0%
		% within Higher education intention	100.0%	100.0%
		% of Total	11.1%	100.0%

Chi-Square Tests

	Value	df	Asymptotic Significance (2- sided)
Pearson Chi-Square	2.602 ^a	4	.627
Likelihood Ratio	2.658	4	.617
N of Valid Cases	649		

a. 0 cells (0.0%) have expected count less than 5. The minimum expected count is 5.92.

Additional Cross Tabulation: Family Support by Higher Educat

Symmetric Measures

		Value	Approximate Significance
Nominal by Nominal	Phi	.063	.627
	Cramer's V	.063	.627
N of Valid Cases		649	

235 0 M>

TITLE "Additional Cross Tabulation: Paid Classes by Higher Education Intention".

236 0 M> TITLE "Additional Cross Tabulation: Paid Classes by Higher Education Intention".

>Warning # 2003. Command name: TITLE

>The title given exceeds 60 characters in length. The first 60 characters will

>be used.

Additional Cross Tabulation: Paid Classes by Higher Educatio

```

237  0 M>
CROSSTABS
238  0 M>  CROSSTABS
        /TABLES=paid BY higher
239  0 M>    /TABLES=paid BY higher
        /FORMAT=AVALUE TABLES
240  0 M>    /FORMAT=AVALUE TABLES
        /STATISTICS=CHISQ PHI
241  0 M>    /STATISTICS=CHISQ PHI
        /CELLS=COUNT ROW COLUMN TOTAL EXPECTED
242  0 M>    /CELLS=COUNT ROW COLUMN TOTAL EXPECTED
        /COUNT ROUND CELL.
243  0 M>    /COUNT ROUND CELL.

```

Crosstabs

Case Processing Summary

	Valid		Cases Missing		Total	
	N	Percent	N	Percent	N	Percent
Paid classes * Higher education intention	649	100.0%	0	0.0%	649	100.0%

Additional Cross Tabulation: Paid Classes by Higher Educatio

Paid classes * Higher education intention Crosstabulation

		Higher education intention				
		at_home	health	other	services	
Paid classes	0	Count	3	0	3	0
		Expected Count	1.2	.4	2.4	1.3
		% within Paid classes	50.0%	0.0%	50.0%	0.0%
		% within Higher education intention	2.2%	0.0%	1.2%	0.0%
		% of Total	0.5%	0.0%	0.5%	0.0%
	1	Count	67	2	68	6
		Expected Count	29.7	10.6	56.8	30.0
		% within Paid classes	46.9%	1.4%	47.6%	4.2%
		% within Higher education intention	49.6%	4.2%	26.4%	4.4%
		% of Total	10.3%	0.3%	10.5%	0.9%
	2	Count	40	5	95	46
		Expected Count	38.7	13.8	73.9	39.0
		% within Paid classes	21.5%	2.7%	51.1%	24.7%
		% within Higher education intention	29.6%	10.4%	36.8%	33.8%
		% of Total	6.2%	0.8%	14.6%	7.1%
	3	Count	20	5	58	53
		Expected Count	28.9	10.3	55.3	29.1
		% within Paid classes	14.4%	3.6%	41.7%	38.1%
		% within Higher education intention	14.8%	10.4%	22.5%	39.0%
		% of Total	3.1%	0.8%	8.9%	8.2%
4	Count	5	36	34	31	
	Expected Count	36.4	12.9	69.6	36.7	

Additional Cross Tabulation: Paid Classes by Higher Educatio

Paid classes * Higher education intention Crosstabulation

			Higher ... teacher	Total
Paid classes	0	Count	0	6
		Expected Count	.7	6.0
		% within Paid classes	0.0%	100.0%
		% within Higher education intention	0.0%	0.9%
		% of Total	0.0%	0.9%
	1	Count	0	143
		Expected Count	15.9	143.0
		% within Paid classes	0.0%	100.0%
		% within Higher education intention	0.0%	22.0%
		% of Total	0.0%	22.0%
	2	Count	0	186
		Expected Count	20.6	186.0
		% within Paid classes	0.0%	100.0%
		% within Higher education intention	0.0%	28.7%
		% of Total	0.0%	28.7%
	3	Count	3	139
		Expected Count	15.4	139.0
		% within Paid classes	2.2%	100.0%
		% within Higher education intention	4.2%	21.4%
		% of Total	0.5%	21.4%
4	Count	69	175	
	Expected Count	19.4	175.0	

Additional Cross Tabulation : Paid Classes by Higher Educatio

Paid classes * Higher education intention Crosstabulation

		Higher education intention			
		at_home	health	other	services
	% within Paid classes	2.9%	20.6%	19.4%	17.7%
	% within Higher education intention	3.7%	75.0%	13.2%	22.8%
	% of Total	0.8%	5.5%	5.2%	4.8%
Total	Count	135	48	258	136
	Expected Count	135.0	48.0	258.0	136.0
	% within Paid classes	20.8%	7.4%	39.8%	21.0%
	% within Higher education intention	100.0%	100.0%	100.0%	100.0%
	% of Total	20.8%	7.4%	39.8%	21.0%

Paid classes * Higher education intention Crosstabulation

		Higher ... teacher	Total
	% within Paid classes	39.4%	100.0%
	% within Higher education intention	95.8%	27.0%
	% of Total	10.6%	27.0%
Total	Count	72	649
	Expected Count	72.0	649.0
	% within Paid classes	11.1%	100.0%
	% within Higher education intention	100.0%	100.0%
	% of Total	11.1%	100.0%

Chi-Square Tests

	Value	df	Asymptotic Significance (2- sided)
Pearson Chi-Square	378.368 ^a	16	.000
Likelihood Ratio	376.239	16	.000
N of Valid Cases	649		

a. 5 cells (20.0%) have expected count less than 5. The minimum expected count is .44.

Additional Cross Tabulation: Paid Classes by Higher Educatio

Symmetric Measures

		Value	Approximate Significance
Nominal by Nominal	Phi	.764	.000
	Cramer's V	.382	.000
N of Valid Cases		649	

244 0 M>

TITLE "Additional Cross Tabulation: Activities by Higher Education Intention".

245 0 M> TITLE "Additional Cross Tabulation: Activities by Higher Education Intention".

>Warning # 2003. Command name: TITLE

>The title given exceeds 60 characters in length. The first 60 characters will

be used.

Additional Cross Tabulation: Activities by Higher Education

```

246 0 M>
CROSSTABS
247 0 M> CROSSTABS
      /TABLES=activities BY higher
248 0 M>      /TABLES=activities BY higher
      /FORMAT=AVALUE TABLES
249 0 M>      /FORMAT=AVALUE TABLES
      /STATISTICS=CHISQ PHI
250 0 M>      /STATISTICS=CHISQ PHI
      /CELLS=COUNT ROW COLUMN TOTAL EXPECTED
251 0 M>      /CELLS=COUNT ROW COLUMN TOTAL EXPECTED
      /COUNT ROUND CELL.
252 0 M>      /COUNT ROUND CELL.

```

Crosstabs

Case Processing Summary

	Valid		Cases Missing		Total	
	N	Percent	N	Percent	N	Percent
Extra-curricular activities * Higher education intention	649	100.0%	0	0.0%	649	100.0%

Additional Cross Tabulation: Activities by Higher Education

Extra-curricular activities * Higher education intention Crosstabulation

		Higher education intention			
		at_home	health	other	
Extra-curricular activities	0	Count	2	0	4
		Expected Count	1.5	.5	2.8
		% within Extra-curricular activities	28.6%	0.0%	57.1%
		% within Higher education intention	1.5%	0.0%	1.6%
		% of Total	0.3%	0.0%	0.6%
	1	Count	59	6	83
		Expected Count	36.2	12.9	69.2
		% within Extra-curricular activities	33.9%	3.4%	47.7%
		% within Higher education intention	43.7%	12.5%	32.2%
		% of Total	9.1%	0.9%	12.8%
	2	Count	40	13	97
		Expected Count	43.5	15.5	83.1
		% within Extra-curricular activities	19.1%	6.2%	46.4%
		% within Higher education intention	29.6%	27.1%	37.6%
		% of Total	6.2%	2.0%	14.9%
	3	Count	21	11	47
		Expected Count	27.2	9.7	52.1
		% within Extra-curricular activities	16.0%	8.4%	35.9%
		% within Higher education intention	15.6%	22.9%	18.2%
		% of Total	3.2%	1.7%	7.2%
4	Count	13	18	27	
	Expected Count	26.6	9.5	50.9	

Additional Cross Tabulation: Activities by Higher Education

Extra-curricular activities * Higher education intention Crosstabulation

		Higher education ...		Total	
		services	teacher		
Extra-curricular activities	0	Count	0	1	7
		Expected Count	1.5	.8	7.0
		% within Extra-curricular activities	0.0%	14.3%	100.0%
		% within Higher education intention	0.0%	1.4%	1.1%
		% of Total	0.0%	0.2%	1.1%
	1	Count	25	1	174
		Expected Count	36.5	19.3	174.0
		% within Extra-curricular activities	14.4%	0.6%	100.0%
		% within Higher education intention	18.4%	1.4%	26.8%
		% of Total	3.9%	0.2%	26.8%
	2	Count	46	13	209
		Expected Count	43.8	23.2	209.0
		% within Extra-curricular activities	22.0%	6.2%	100.0%
		% within Higher education intention	33.8%	18.1%	32.2%
		% of Total	7.1%	2.0%	32.2%
	3	Count	33	19	131
		Expected Count	27.5	14.5	131.0
		% within Extra-curricular activities	25.2%	14.5%	100.0%
		% within Higher education intention	24.3%	26.4%	20.2%
		% of Total	5.1%	2.9%	20.2%
4	Count	32	38	128	
	Expected Count	26.8	14.2	128.0	

Additional Cross Tabulation: Activities by Higher Education

Extra-curricular activities * Higher education intention Crosstabulation

		Higher education intention		
		at_home	health	other
	% within Extra-curricular activities	10.2%	14.1%	21.1%
	% within Higher education intention	9.6%	37.5%	10.5%
	% of Total	2.0%	2.8%	4.2%
Total	Count	135	48	258
	Expected Count	135.0	48.0	258.0
	% within Extra-curricular activities	20.8%	7.4%	39.8%
	% within Higher education intention	100.0%	100.0%	100.0%
	% of Total	20.8%	7.4%	39.8%

Extra-curricular activities * Higher education intention Crosstabulation

		Higher education ...		
		services	teacher	Total
	% within Extra-curricular activities	25.0%	29.7%	100.0%
	% within Higher education intention	23.5%	52.8%	19.7%
	% of Total	4.9%	5.9%	19.7%
Total	Count	136	72	649
	Expected Count	136.0	72.0	649.0
	% within Extra-curricular activities	21.0%	11.1%	100.0%
	% within Higher education intention	100.0%	100.0%	100.0%
	% of Total	21.0%	11.1%	100.0%

Additional Cross Tabulation: Activities by Higher Education

Chi-Square Tests

	Value	df	Asymptotic Significance (2-sided)
Pearson Chi-Square	123.492 ^a	16	.000
Likelihood Ratio	127.910	16	.000
N of Valid Cases	649		

a. 5 cells (20.0%) have expected count less than 5. The minimum expected count is .52.

Symmetric Measures

		Value	Approximate Significance
Nominal by Nominal	Phi	.436	.000
	Cramer's V	.218	.000
N of Valid Cases		649	

```

253  0 M>
* -----
254  0 M> * -----
* Bar charts from SPSS for selected cross-tabulations.
255  0 M> * Bar charts from SPSS for selected cross-tabulations.
* These are simple SPSS chart outputs to support the final PDF.
256  0 M> * These are simple SPSS chart outputs to support the final PDF.
* -----
257  0 M> * -----

258  0 M>
TITLE "SPSS Bar Chart: School by Sex".
259  0 M> TITLE "SPSS Bar Chart: School by Sex".

```

SPSS Bar Chart: School by Sex

GRAPH

```
260 0 M> GRAPH
```

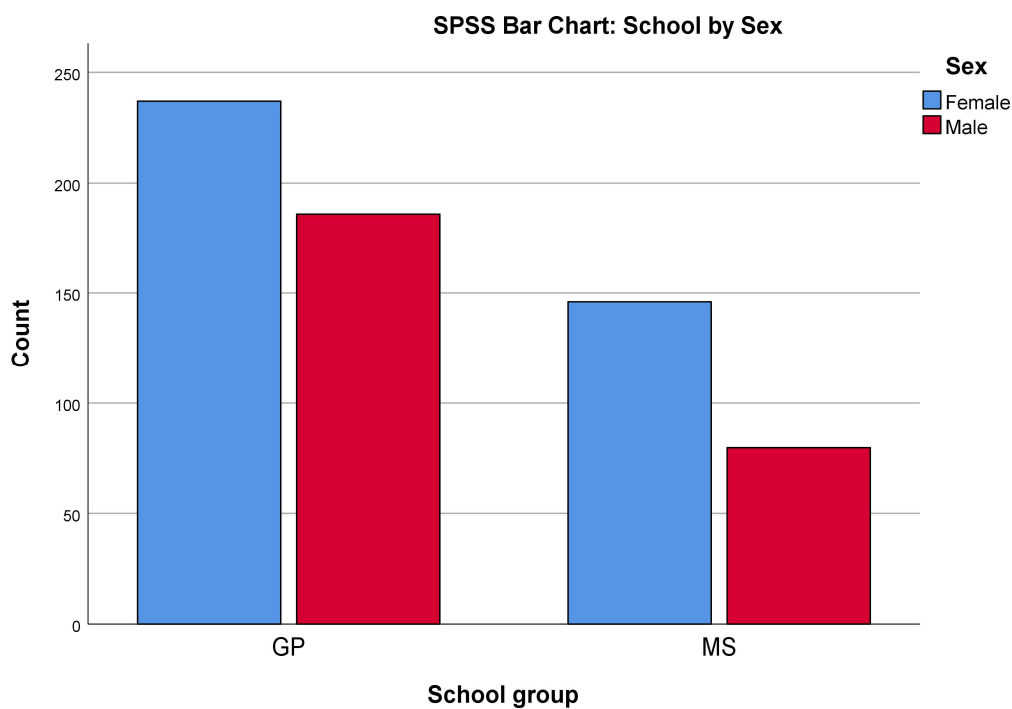
```
  /BAR(GROUPED)=COUNT BY school BY sex
```

```
261 0 M>    /BAR(GROUPED)=COUNT BY school BY sex
```

```
  /TITLE "SPSS Bar Chart: School by Sex".
```

```
262 0 M>    /TITLE "SPSS Bar Chart: School by Sex".
```

Graph



```
263 0 M>
```

```
TITLE "SPSS Bar Chart: School by Higher Education Intention".
```

```
264 0 M> TITLE "SPSS Bar Chart: School by Higher Education Intention".
```

SPSS Bar Chart: School by Higher Education Intention

GRAPH

```
265 0 M> GRAPH
```

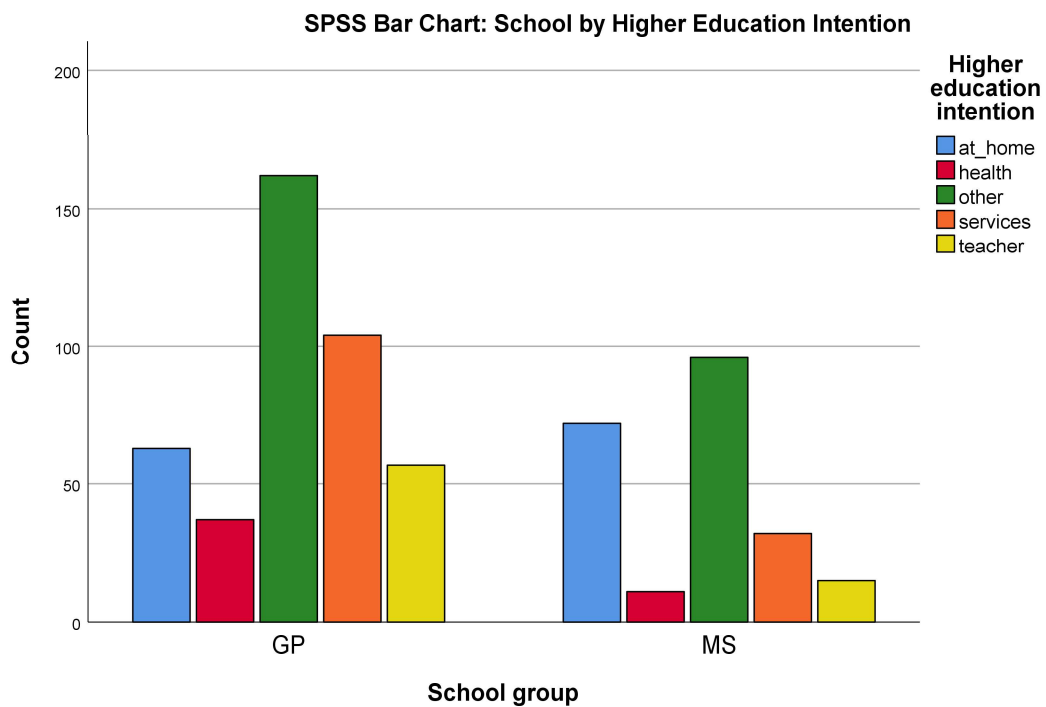
```
/BAR(GROUPED)=COUNT BY school BY higher
```

```
266 0 M> /BAR(GROUPED)=COUNT BY school BY higher
```

```
/TITLE "SPSS Bar Chart: School by Higher Education Intention".
```

```
267 0 M> /TITLE "SPSS Bar Chart: School by Higher Education Intention"
```

Graph



```
268 0 M>
```

```
TITLE "SPSS Bar Chart: Sex by Higher Education Intention".
```

```
269 0 M> TITLE "SPSS Bar Chart: Sex by Higher Education Intention".
```

SPSS Bar Chart: Sex by Higher Education Intention

GRAPH

```
270 0 M> GRAPH
```

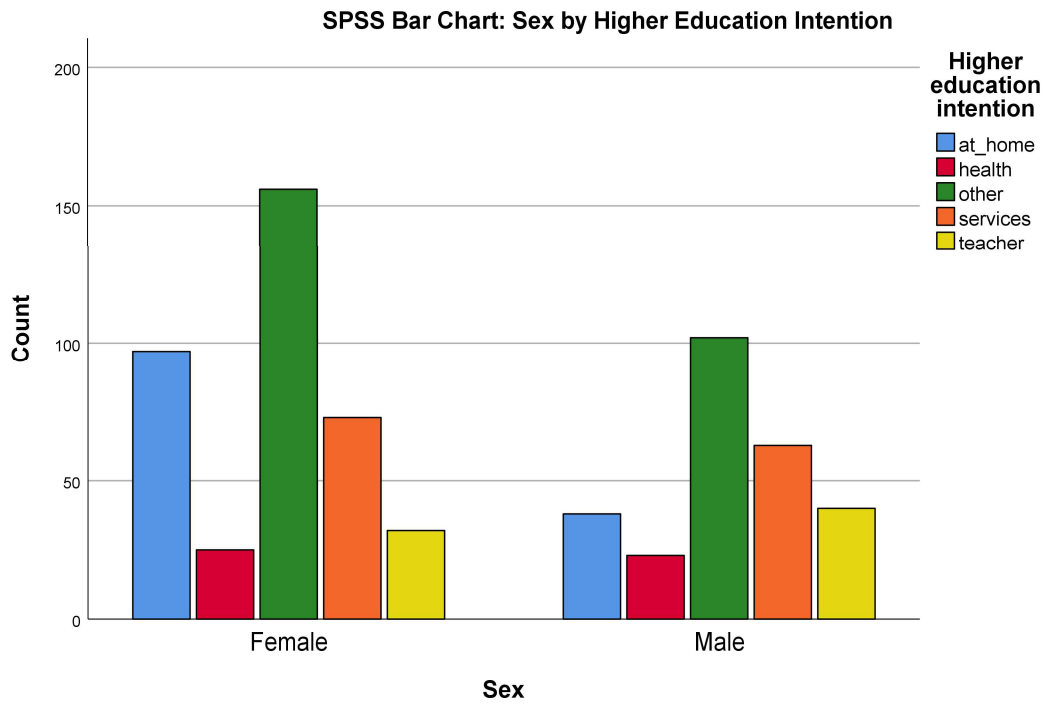
```
  /BAR(GROUPED)=COUNT BY sex BY higher
```

```
271 0 M>  /BAR(GROUPED)=COUNT BY sex BY higher
```

```
  /TITLE "SPSS Bar Chart: Sex by Higher Education Intention".
```

```
272 0 M>  /TITLE "SPSS Bar Chart: Sex by Higher Education Intention".
```

Graph



```
273 0 M>
```

```
TITLE "SPSS Bar Chart: Study Time by Past Failures".
```

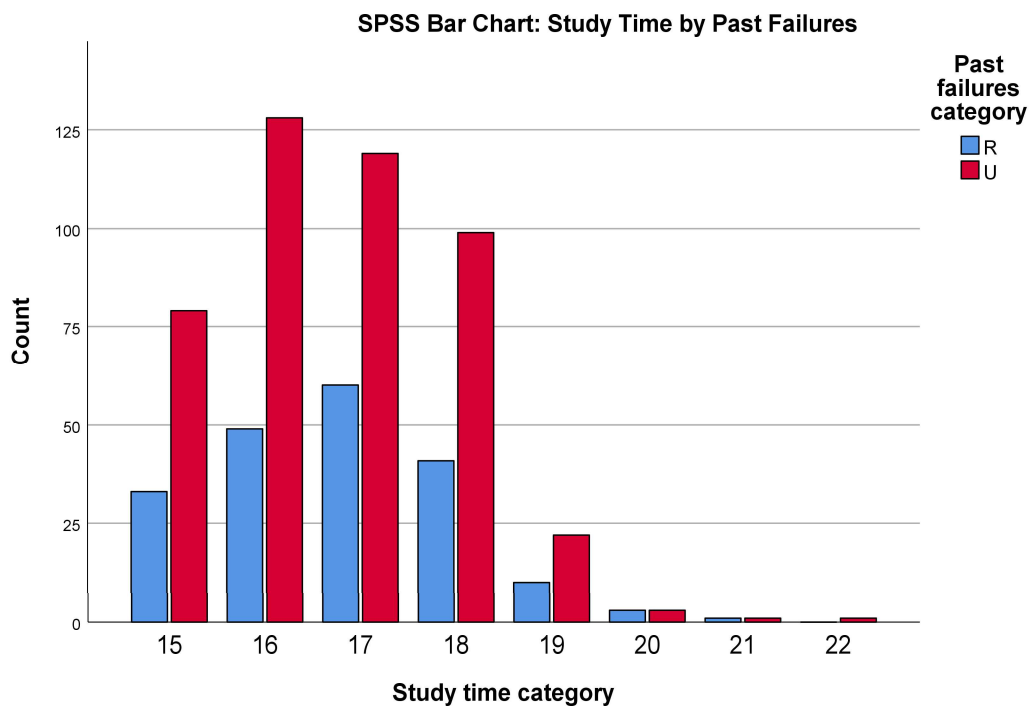
```
274 0 M> TITLE "SPSS Bar Chart: Study Time by Past Failures".
```

SPSS Bar Chart: Study Time by Past Failures

GRAPH

```
275 0 M> GRAPH
      /BAR(GROUPED)=COUNT BY studytime BY failures
276 0 M> /BAR(GROUPED)=COUNT BY studytime BY failures
      /TITLE "SPSS Bar Chart: Study Time by Past Failures".
277 0 M> /TITLE "SPSS Bar Chart: Study Time by Past Failures".
```

Graph



```
278 0 M>
TITLE "SPSS Bar Chart: Internet Access by Higher Education Intention".
279 0 M> TITLE "SPSS Bar Chart: Internet Access by Higher Education Intention".
```

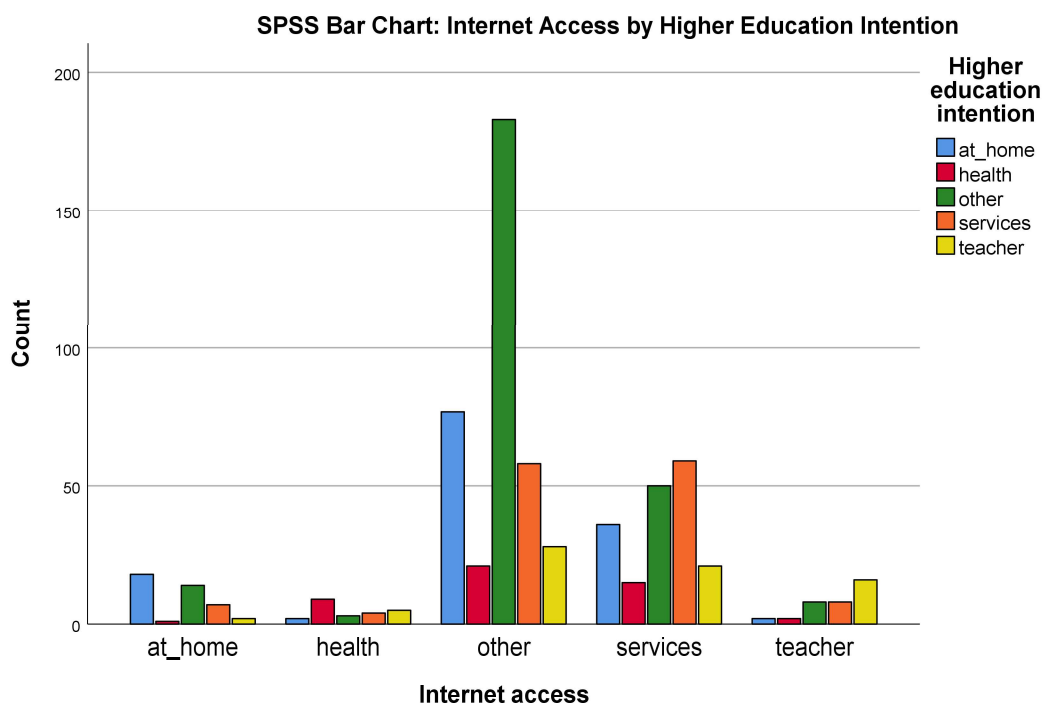
```
>Warning # 2003. Command name: TITLE
>The title given exceeds 60 characters in length. The first 60 characters
1
>be used.
```

SPSS Bar Chart: Internet Access by Higher Education Intention

GRAPH

```
280 0 M> GRAPH
      /BAR(GROUPED)=COUNT BY internet BY higher
281 0 M> /BAR(GROUPED)=COUNT BY internet BY higher
      /TITLE "SPSS Bar Chart: Internet Access by Higher Education Intention".
282 0 M> /TITLE "SPSS Bar Chart: Internet Access by Higher Education
ntion".
```

Graph



```
283 0 M>
TITLE "SPSS Bar Chart: Romantic Relationship by Study Time".
284 0 M> TITLE "SPSS Bar Chart: Romantic Relationship by Study Time".
```

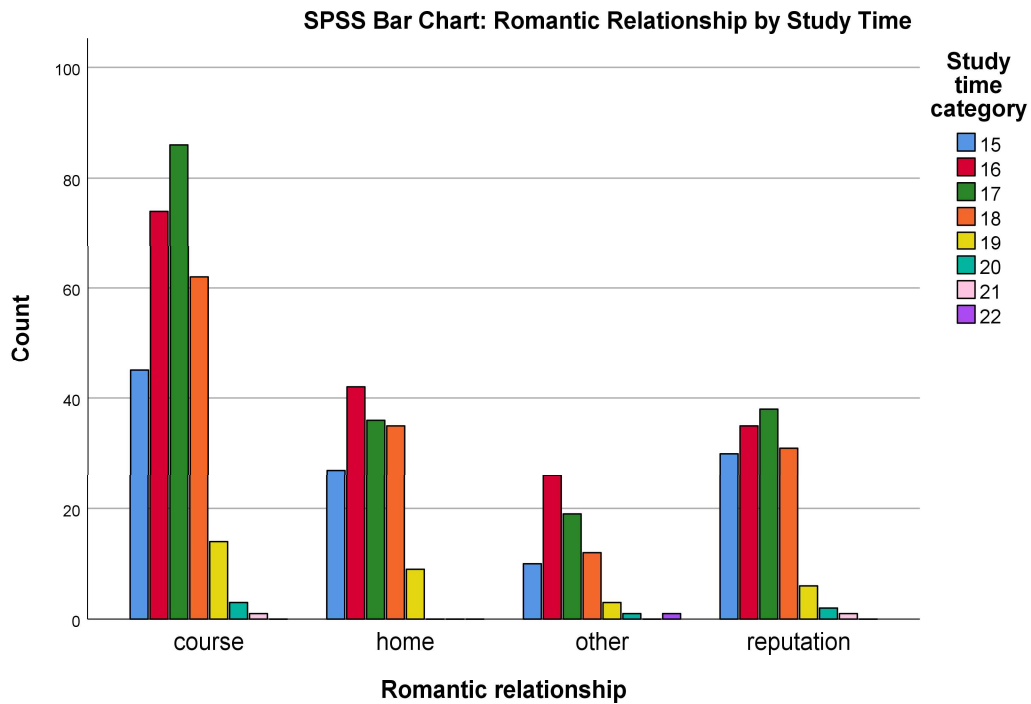
SPSS Bar Chart: Romantic Relationship by Study Time

GRAPH

```

285 0 M> GRAPH
      /BAR(GROUPED)=COUNT BY romantic BY studytime
286 0 M>   /BAR(GROUPED)=COUNT BY romantic BY studytime
      /TITLE "SPSS Bar Chart: Romantic Relationship by Study Time".
287 0 M>   /TITLE "SPSS Bar Chart: Romantic Relationship by Study Time"
  
```

Graph



288 0 M>

* -----.

289 0 M>

* Export SPSS output to PDF.

290 0 M> * Export SPSS output to PDF.

* -----.

291 0 M>

* -----.

292 0 M>

OUTPUT EXPORT

293 0 M> OUTPUT EXPORT

/CONTENTS EXPORT=ALL LAYERS=PRINTSETTING MODELVIEWS=PRINTSETTING

SPSS Bar Chart: Romantic Relationship by Study Time

```
294  0 M>      /CONTENTS EXPORT=ALL LAYERS=PRINTSETTING MODELVIEWS=PRINTSETTING
          /PDF DOCUMENTFILE='D:\DATA ANALYSIS\A Basic Descriptive Statistics Guides\Cross
Tabulation\Python_Output\pdf\Cross-Tabulation-SPSS-Output.pdf'
295  0 M>      /PDF DOCUMENTFILE='D:\DATA ANALYSIS\A Basic Descriptive Statistics
Guides\Cross Tabulation\Python_Output\pdf\Cross-Tab
          ulation-SPSS-Output.pdf'
          /EMBEDBOOKMARKS=YES
296  0 M>      /EMBEDBOOKMARKS=YES
          /EMBEDFONTS=YES.
297  0 M>      /EMBEDFONTS=YES.
```

Output Export

Warnings

The name EMBEDBOOKMARKS is not a recognized subcommand.

Execution of this command stops.

```
298  0 M>
EXECUTE.
299  0 M> EXECUTE.

300  0 M>
TITLE.
301  0 M> TITLE.
```

